



# Special Education Funding

School District of Lancaster(SDOL)

Pedro Rivera

Superintendent



•Number of students: 11,124 (K-12)

•Total Staff: 1,637




•13 Elementary Schools

•4 Middle Schools

•1 High School Campus

•Alternative Sites



A large, close-up, black and white photograph of a person's face, showing their eyes, nose, and mouth. The person has dark skin and is looking slightly to the right.

✖Poverty rate: 82%

✖Number of homeless students: 1000+

✖Number of shelters: 8+



- **Special Education Students: 2,000**



- **English Language Learners (ELL): 2,241**



- **Gifted and Talented Students: 189**



Total % of SDoL Population: 46%

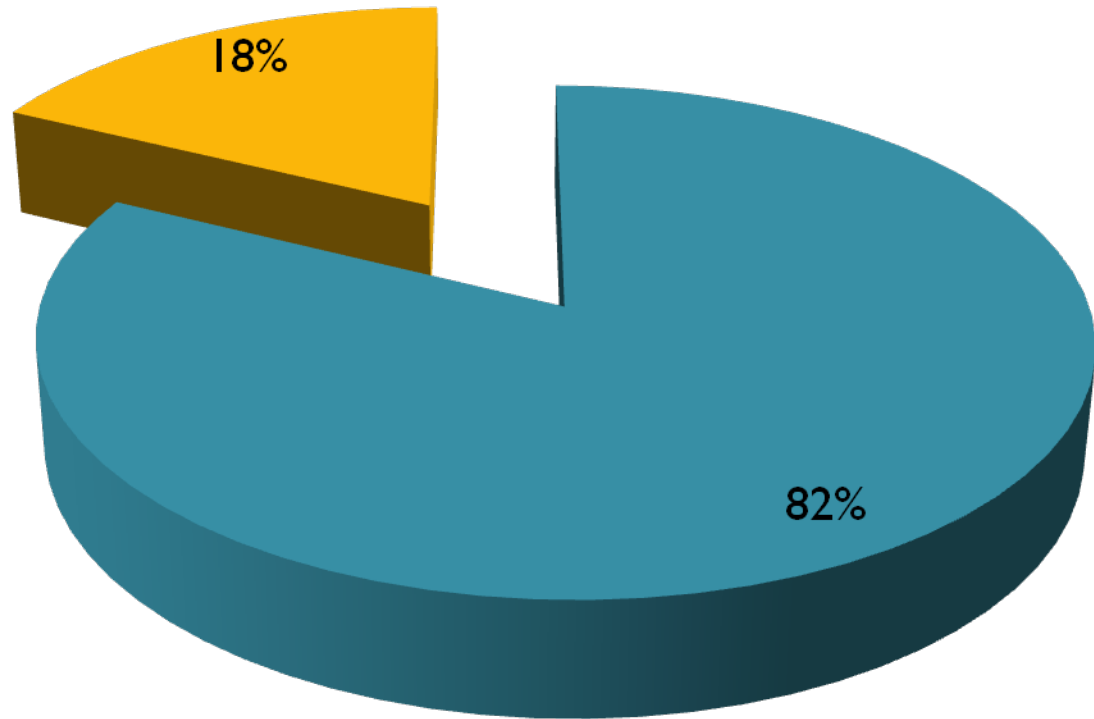
Advancing Learning in Lancaster



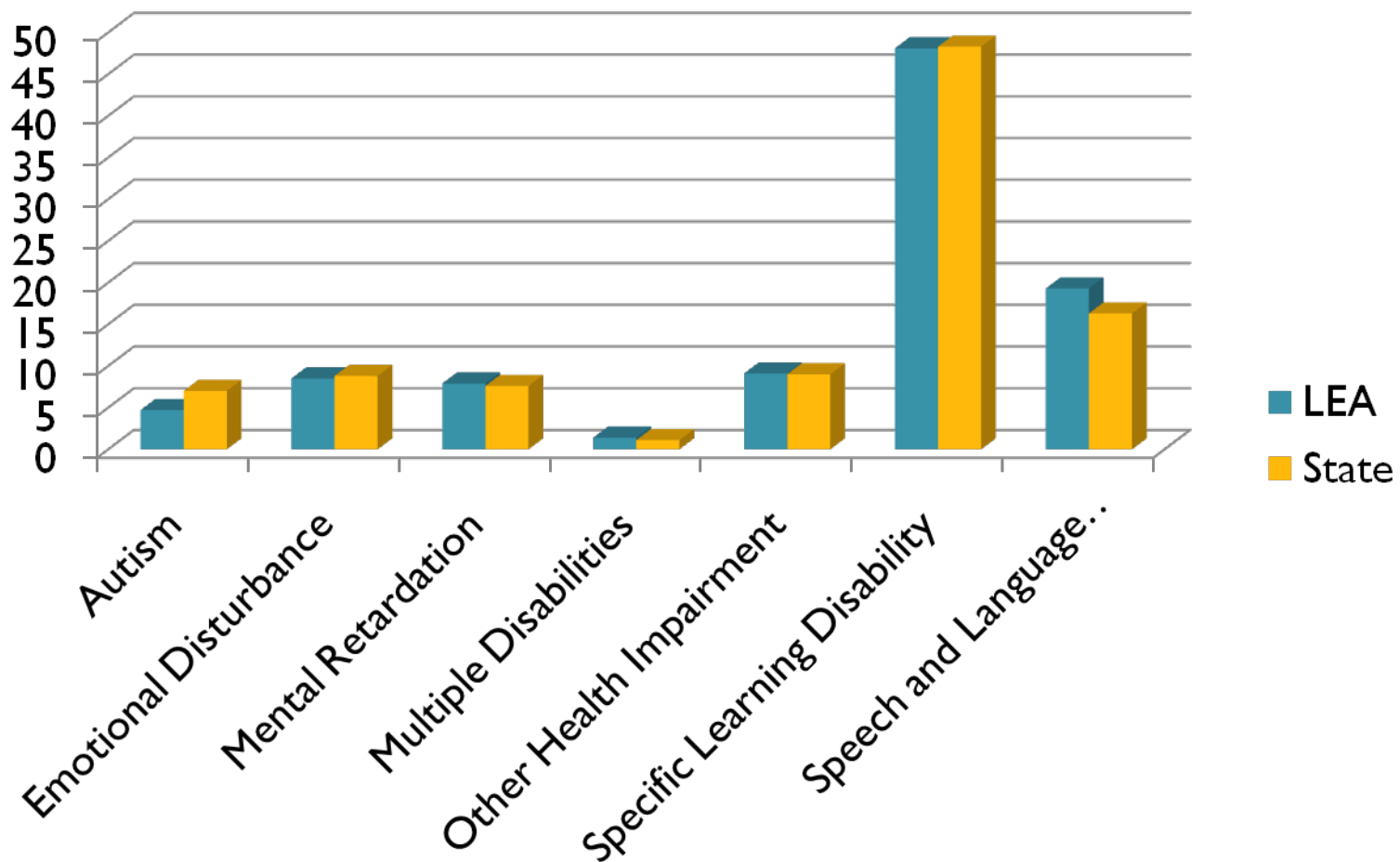
TOGETHER WE CAN

## Special Education vs General Education

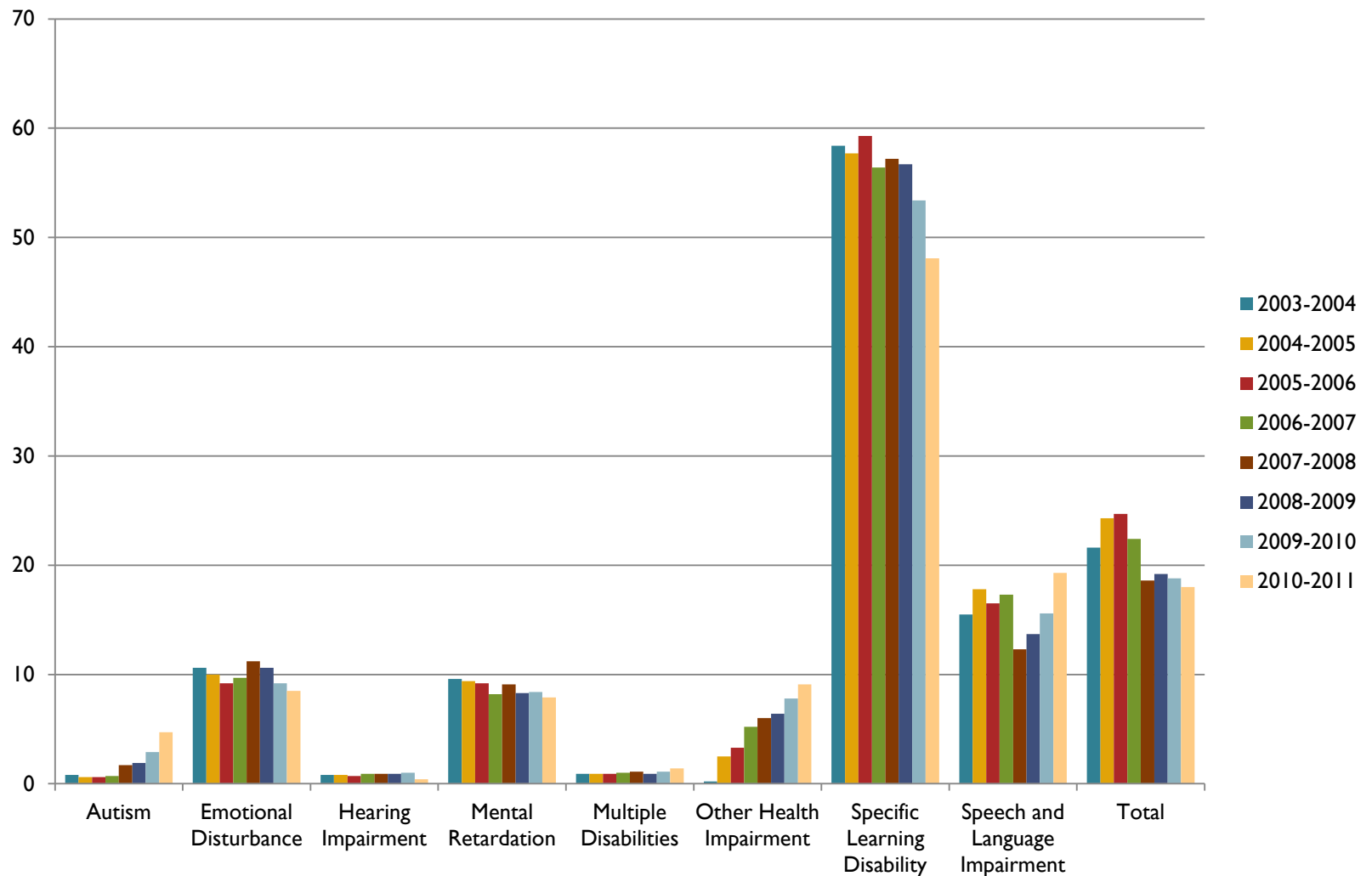
■ Total Enrollment    ■ Special Education Enrollment



# School District of Lancaster Special Education Demographics



# Disability Trend In SDOL





# Identification Rate of Students in SDOL

- A decrease in Specific Learning Disability do to instructional interventions at all sites
- An increase in Autism and Other Health Impairment.
- Of the 180+ students new special education students for the 2010-2011 SY, 56.7% entered already eligible for services.

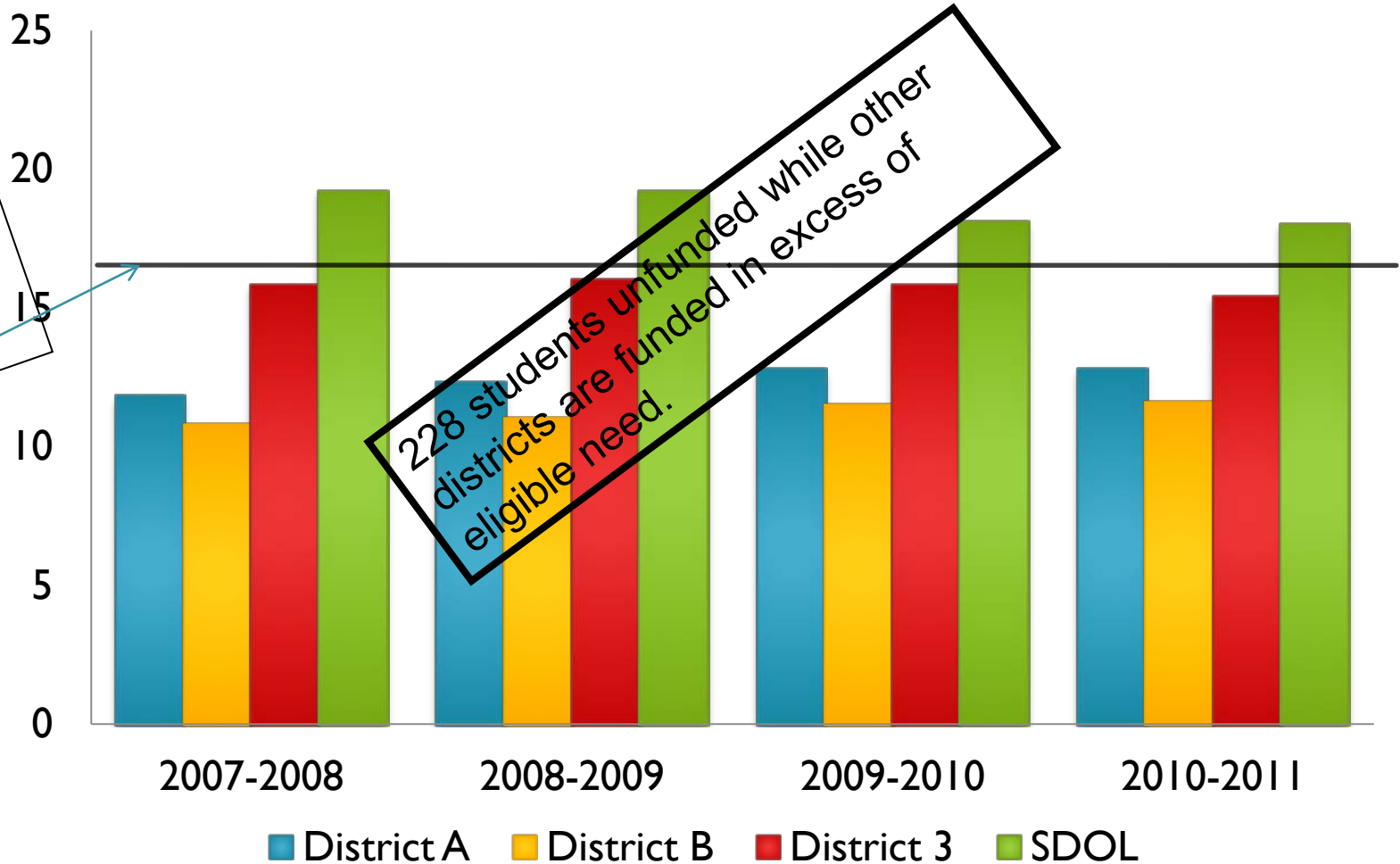




We have dedicated staff and a diverse population of students.

**Providing a quality Free and Appropriate Education without appropriate funding streams is a challenge we face every day.**

# State funding comparing SDOL and three neighboring districts



# SDOL Special Education Funding

	2008-2009	2009-2010	2010-2011
Net Funding of Special Education	\$20,698,340	\$23,243,661	\$24,427,291
Percentage of District Spending	13.4%	14.8%	14.9%
Percentage funded through IDEA			
Percentage funded			



# Measures to Reduce Costs

	2008-2009	2009-2010	2010-2011
FTE Special Ed Teachers	147	155	141
FTE Paraprofessionals	95	89	85
FTE Clerical Support	7	7	6
FTE Psychologists	8	8	7





Who do we get to choose not to fund?





# Closing Remarks